



Third Quarter 2010 Thrift Industry Report
Economic Data
December 3, 2010

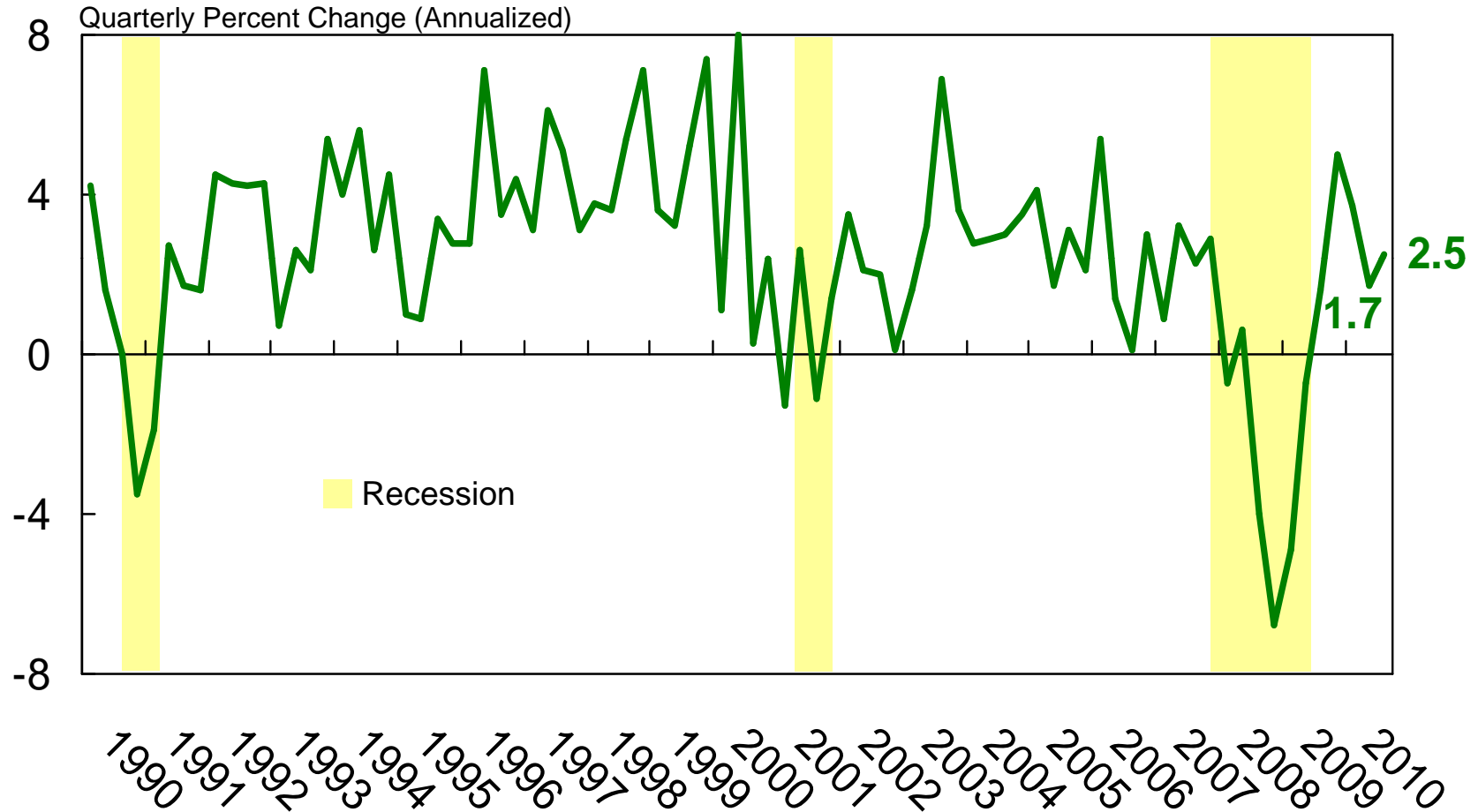


Third Quarter 2010 Index of Charts Economic Data

● Gross Domestic Product	1
● Unemployment and Underemployment Rates	2
● Inflation	3
● New and Existing Home Sales	4
● New and Existing Homes Supply	5
● S&P / Case-Shiller Home Price Indices	6
● Residential vs. Commercial Property Prices	7
● Commercial Property Price Growth Rates By Sector	8
● Vacancy Rates by Property Type	9
● Troubled Residential First Mortgage Loans	10
● Treasury Yield Curves	11

GROSS DOMESTIC PRODUCT

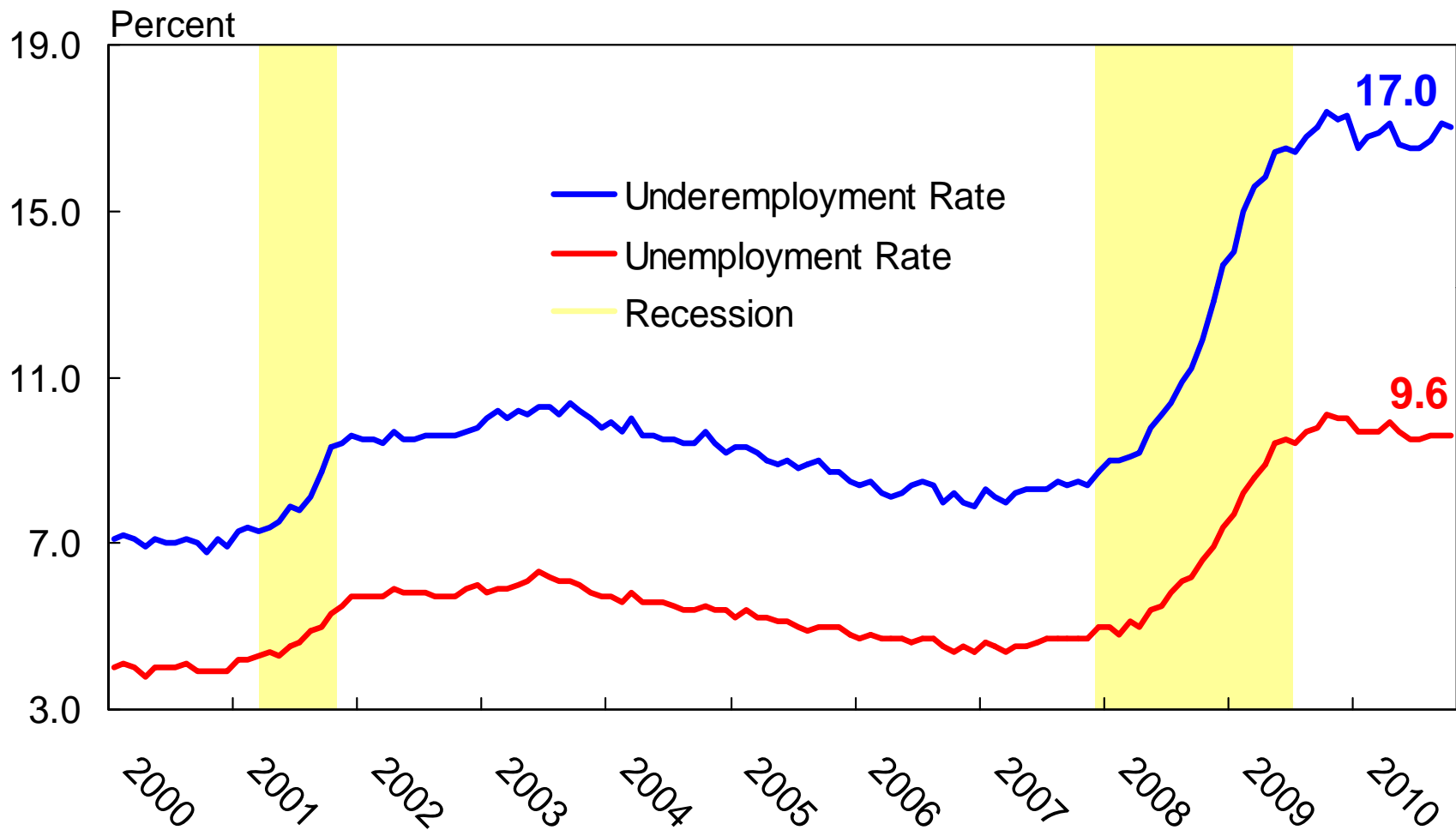
As of September 2010



Source: Bureau of Economic Analysis
Office of Thrift Supervision / December 2010

UNEMPLOYMENT AND UNDEREMPLOYMENT RATES

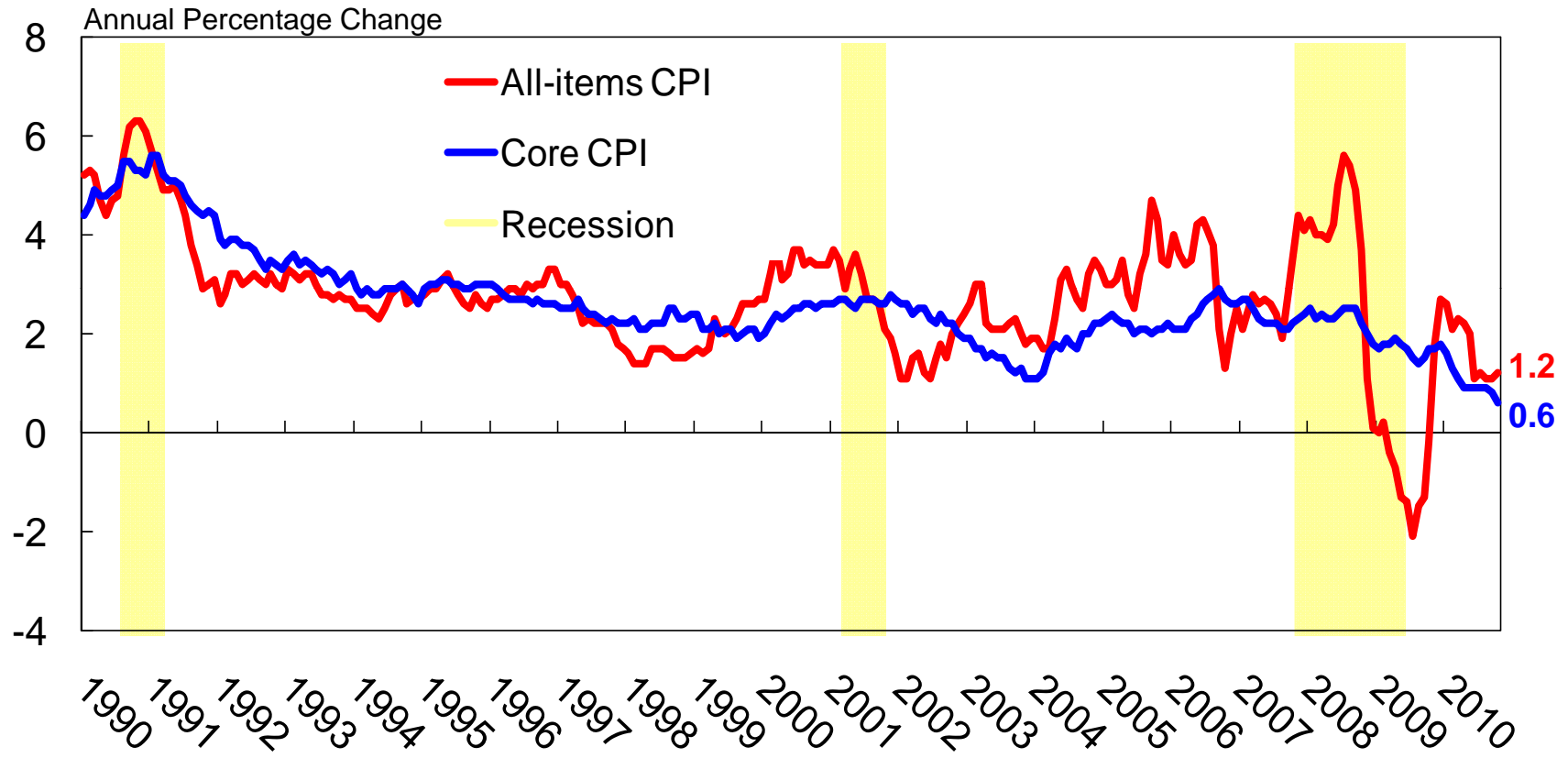
As of October 2010



Source: Bureau of Labor Statistics
Office of Thrift Supervision / December 2010

INFLATION

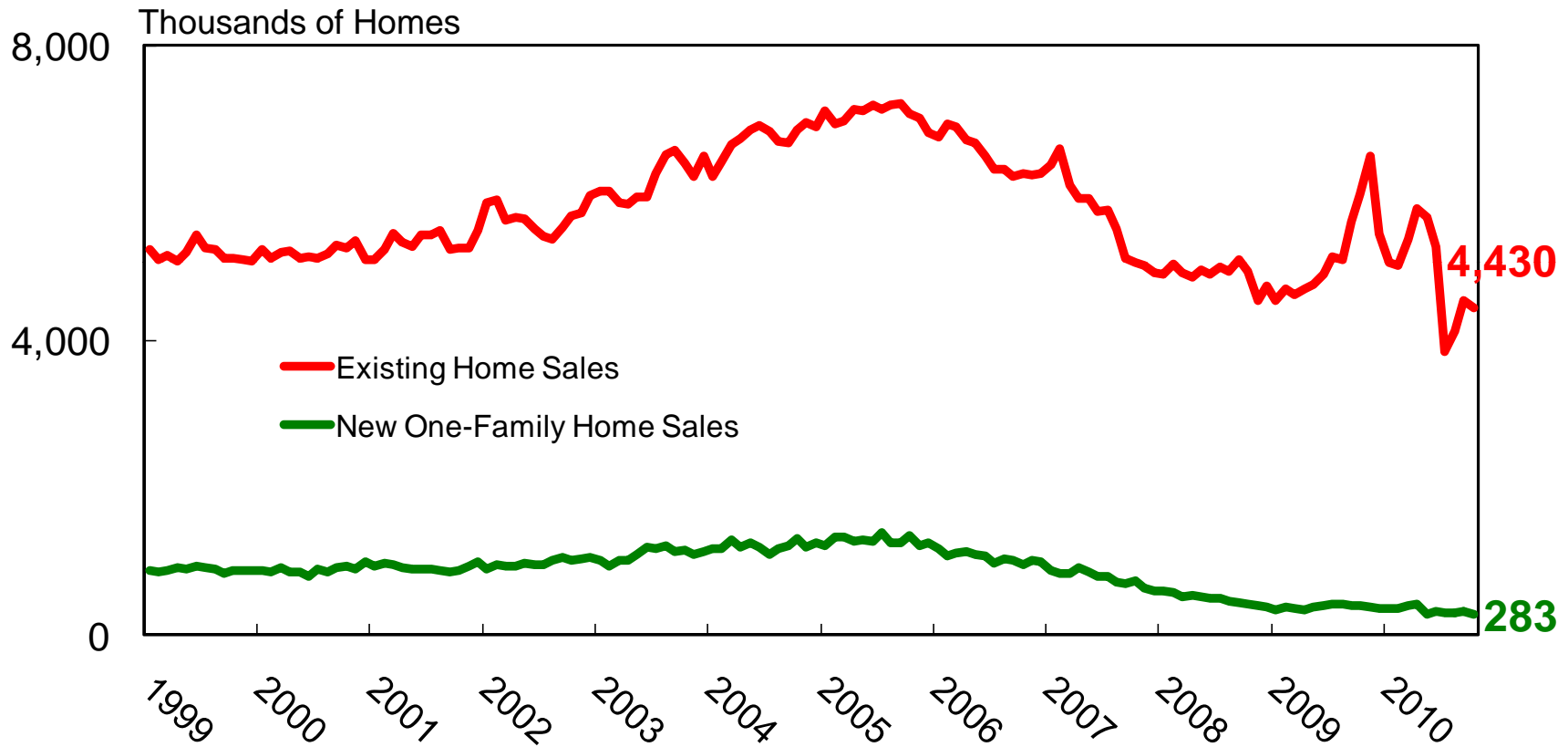
As of October 2010



Source: Bureau of Labor Statistics
CPI: Consumer Price Index, Core CPI: CPI less food and energy.
Office of Thrift Supervision / December 2010

NEW AND EXISTING HOME SALES

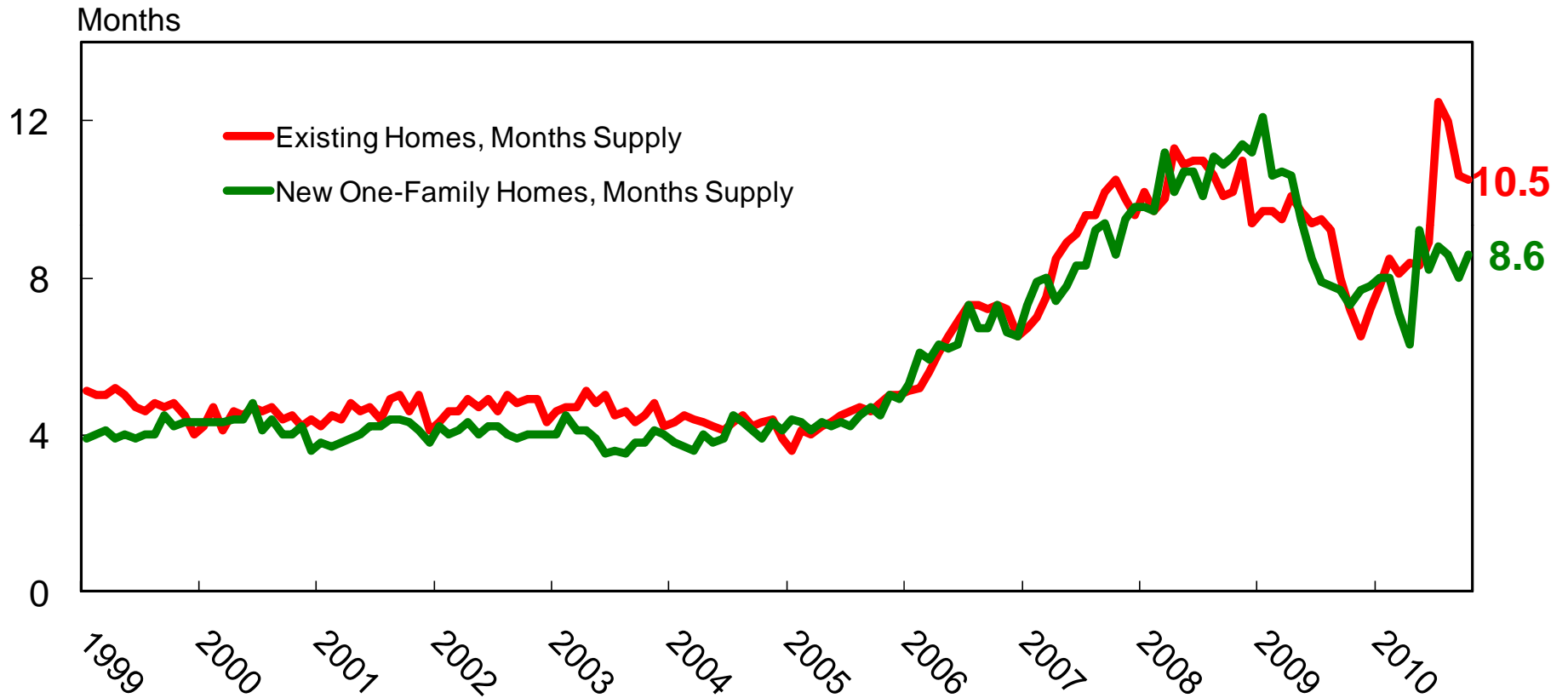
As of October 2010



Sources: US Census Bureau, National Association of Realtors
Office of Thrift Supervision / December 2010

NEW AND EXISTING HOMES SUPPLY

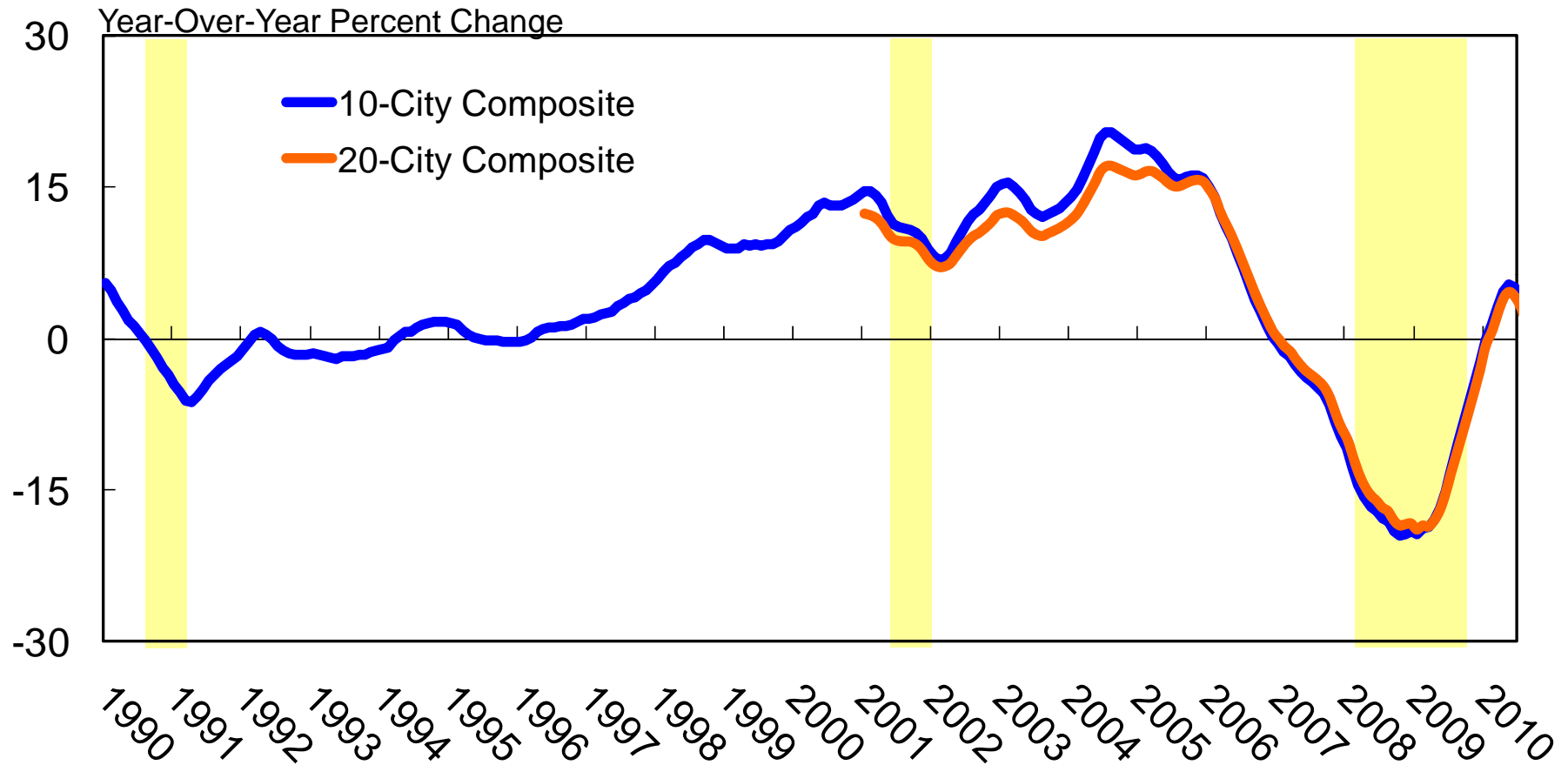
As of October 2010



Sources: US Census Bureau, National Association of Realtors
Office of Thrift Supervision / December 2010

S&P / CASE-SHILLER HOME PRICE INDICES

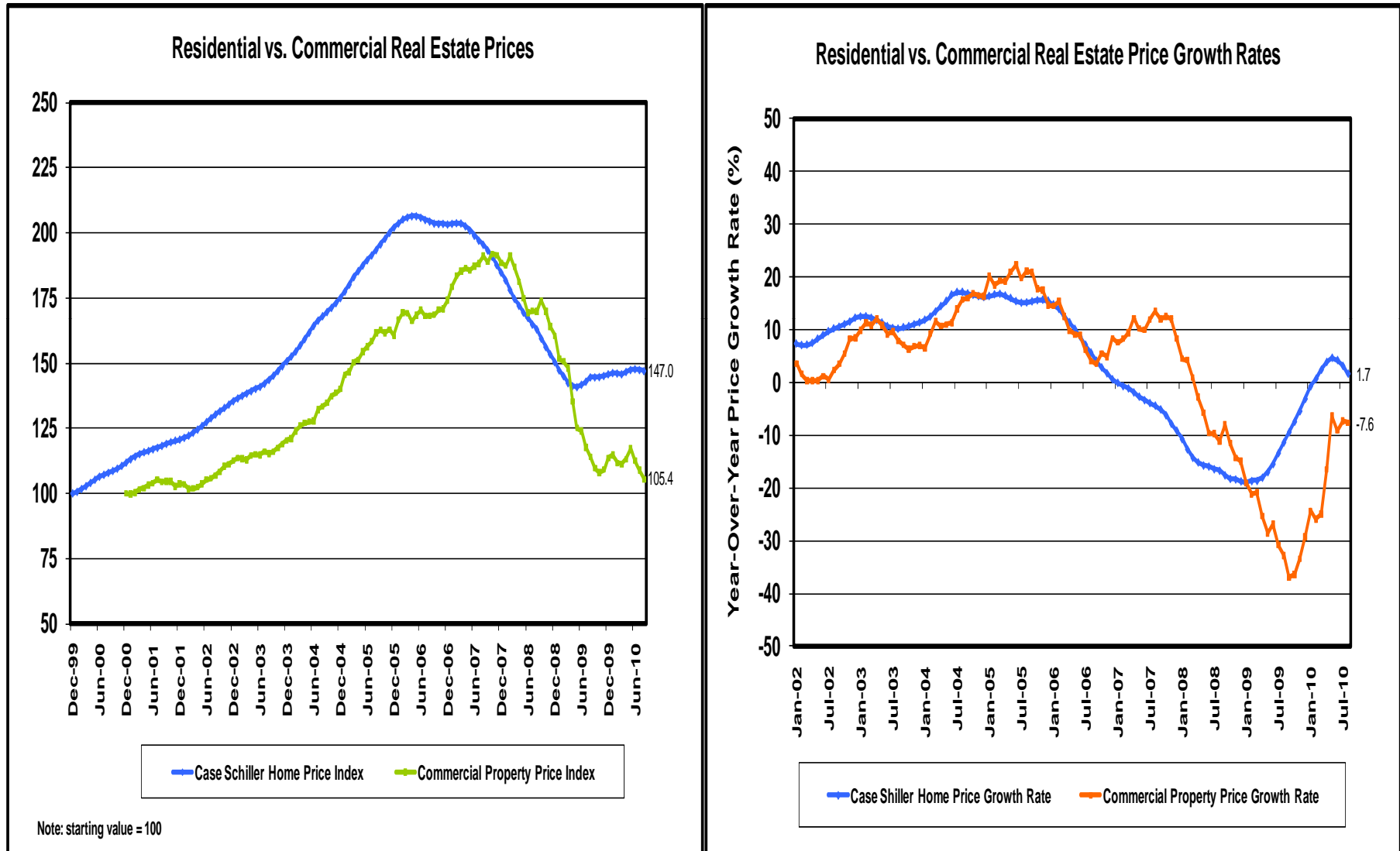
As of September 2010



Source: S&P / Case-Shiller Home Price Indices
Office of Thrift Supervision / December 2010

RESIDENTIAL VS. COMMERCIAL PROPERTY PRICES

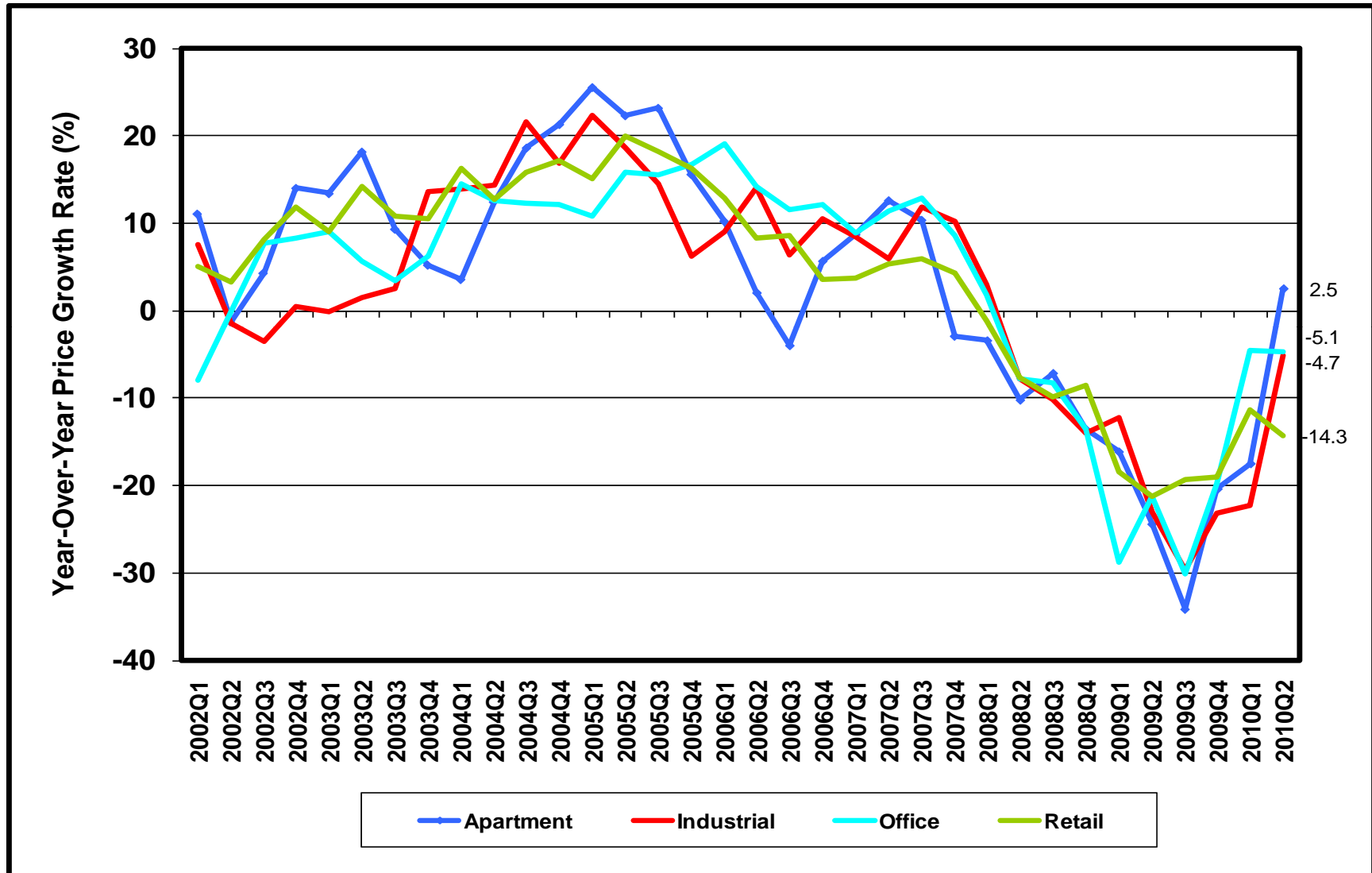
As of September 2010



Sources: S&P / Case-Schiller Home Price Indices and Moody's / MIT Office of Thrift Supervision / December 2010

COMMERCIAL PROPERTY PRICE GROWTH RATES BY SECTOR

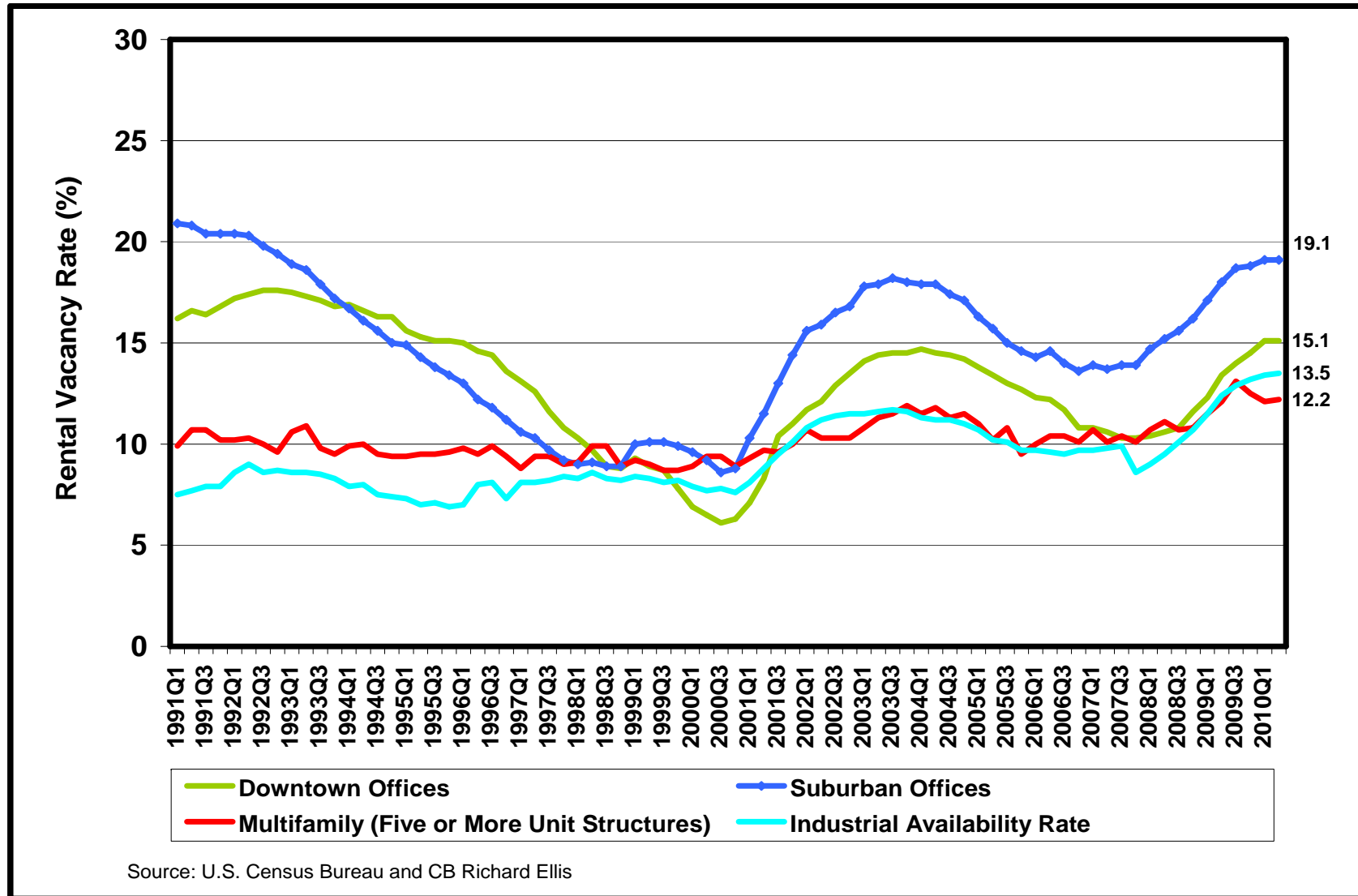
As of Second Quarter 2010



Source: Moody's / MIT
Office of Thrift Supervision / December 2010

VACANCY RATES BY PROPERTY TYPE

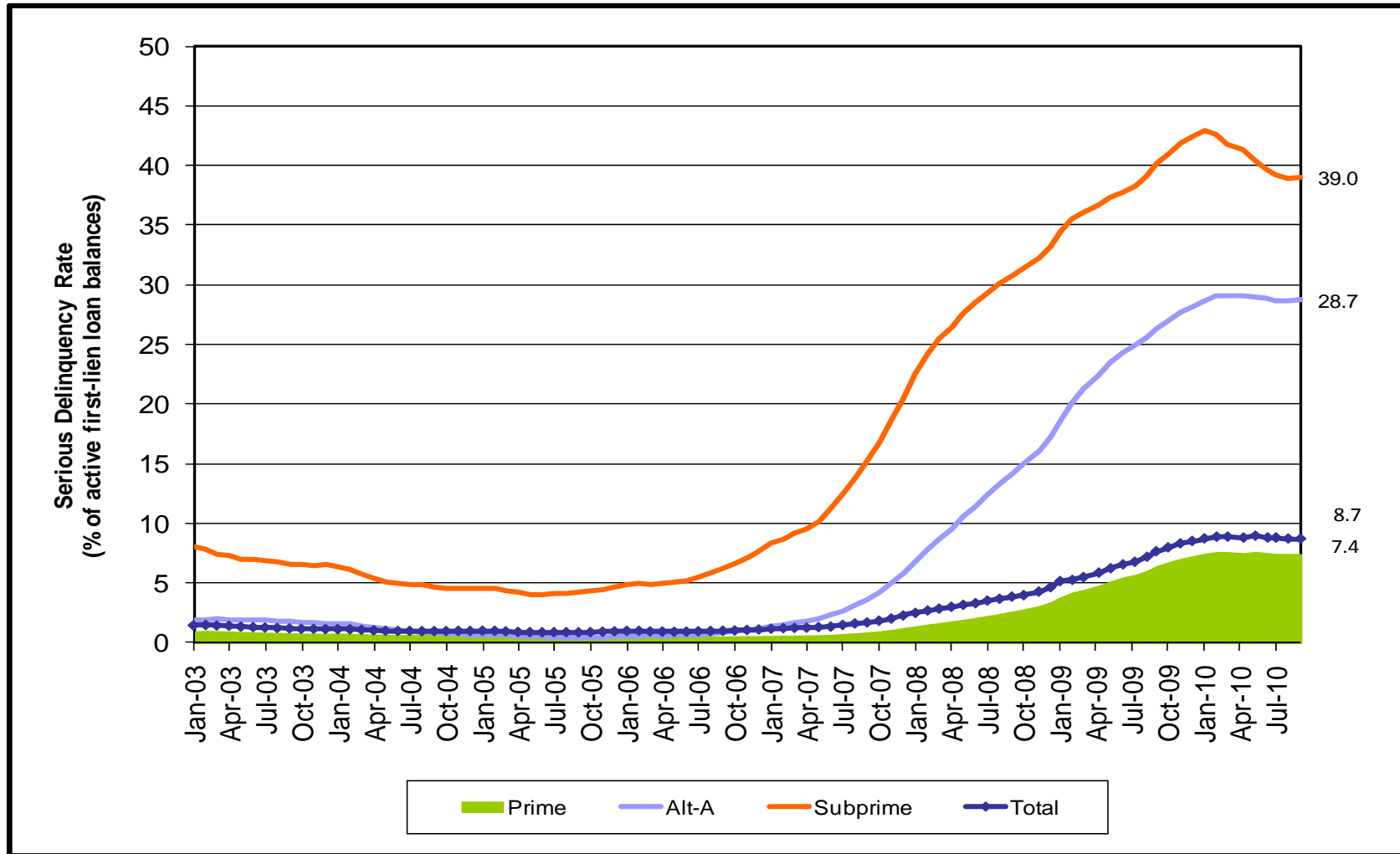
As of Third Quarter 2010



Sources: U.S. Census Bureau and CB Richard Ellis
Office of Thrift Supervision / December 2010

TROUBLED RESIDENTIAL FIRST MORTGAGE LOANS

As of September 2010



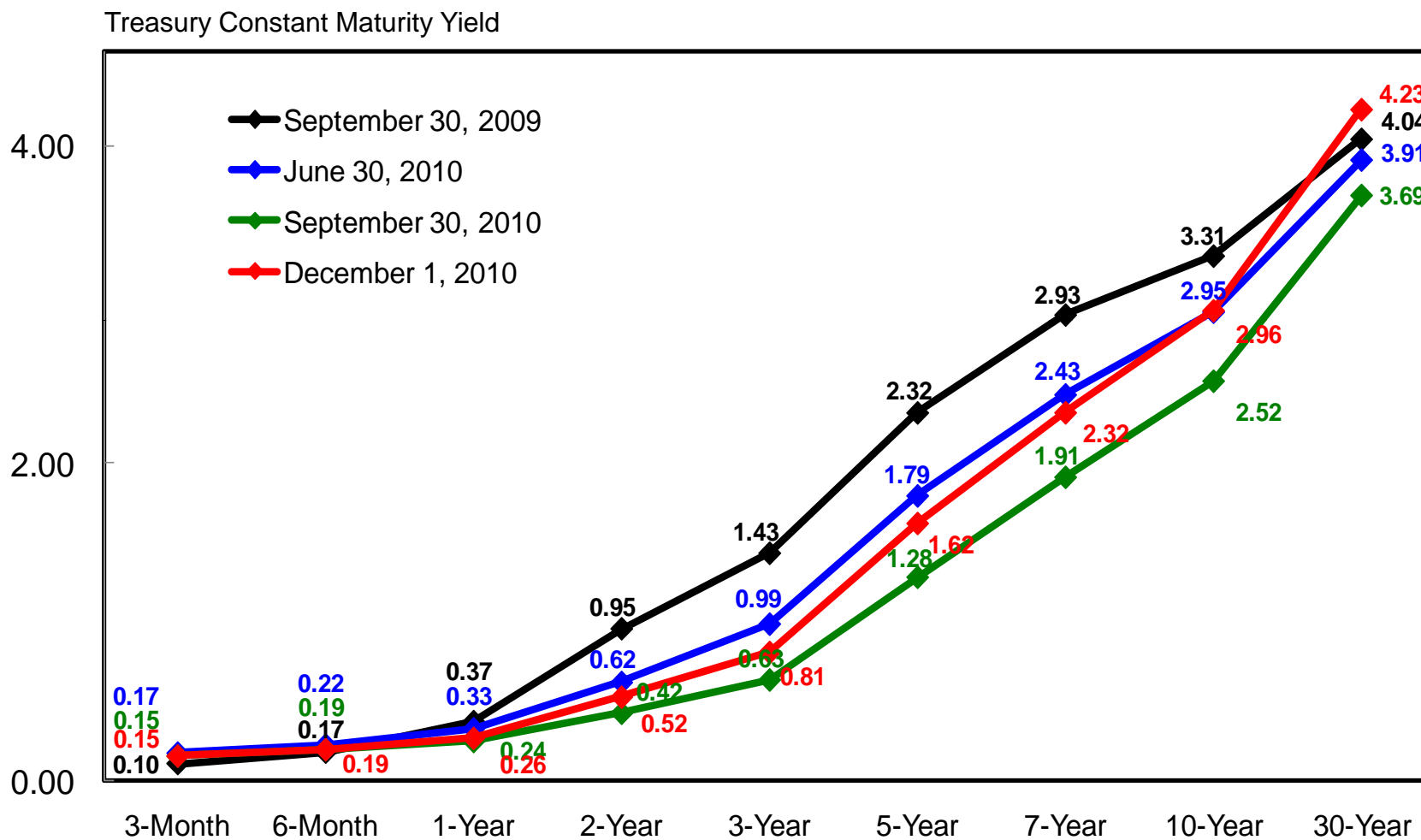
Source: First American Loan Performance database of over 45 million active mortgage loans.

Data are provided monthly by participating US mortgage lenders of all types.

Troubled mortgage loans include mortgage loans 90 days or more past due or in nonaccrual status and repossessed assets.

Office of Thrift Supervision / December 2010

TREASURY YIELD CURVES



Sources: Federal Reserve, Bloomberg
Office of Thrift Supervision / December 2010